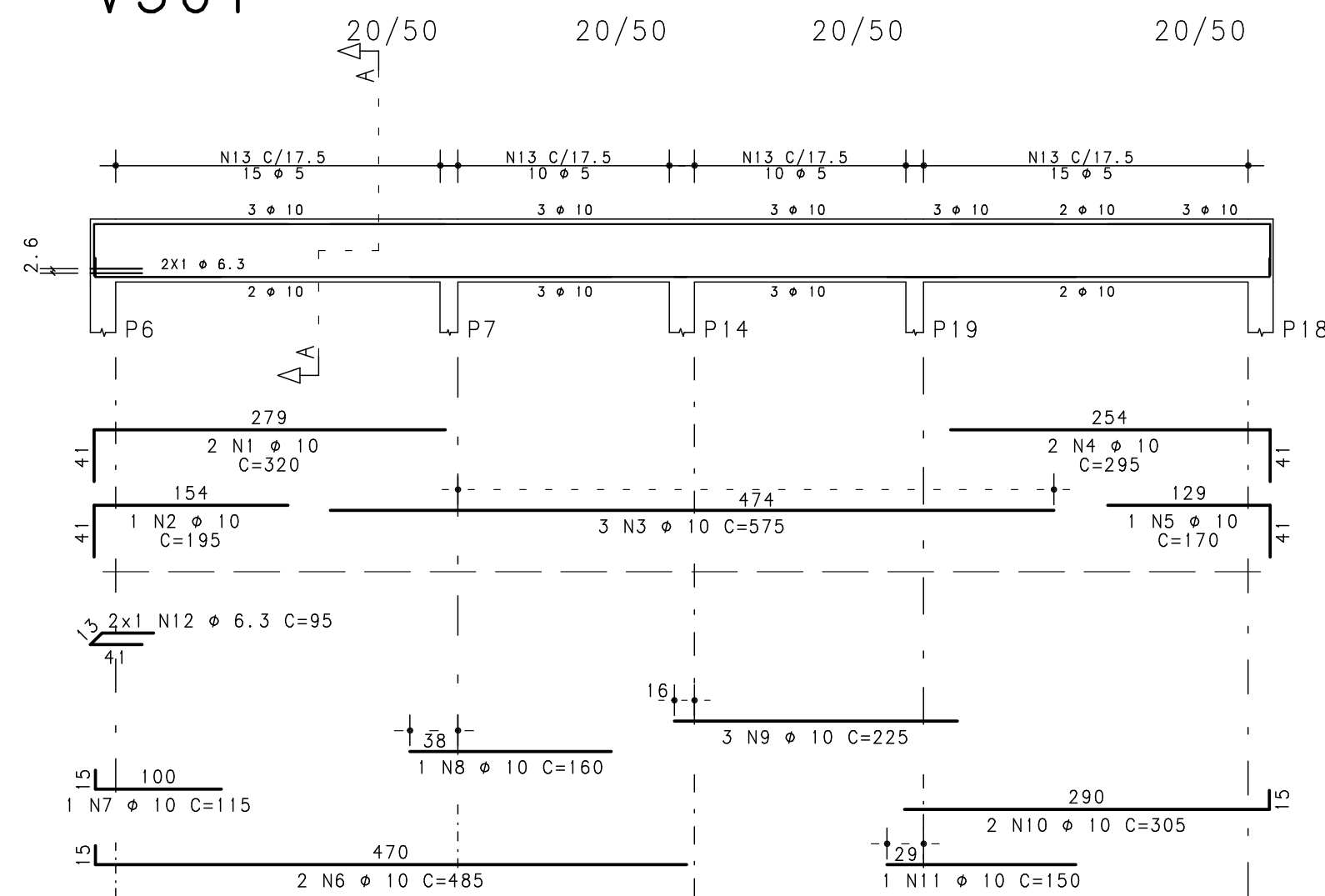
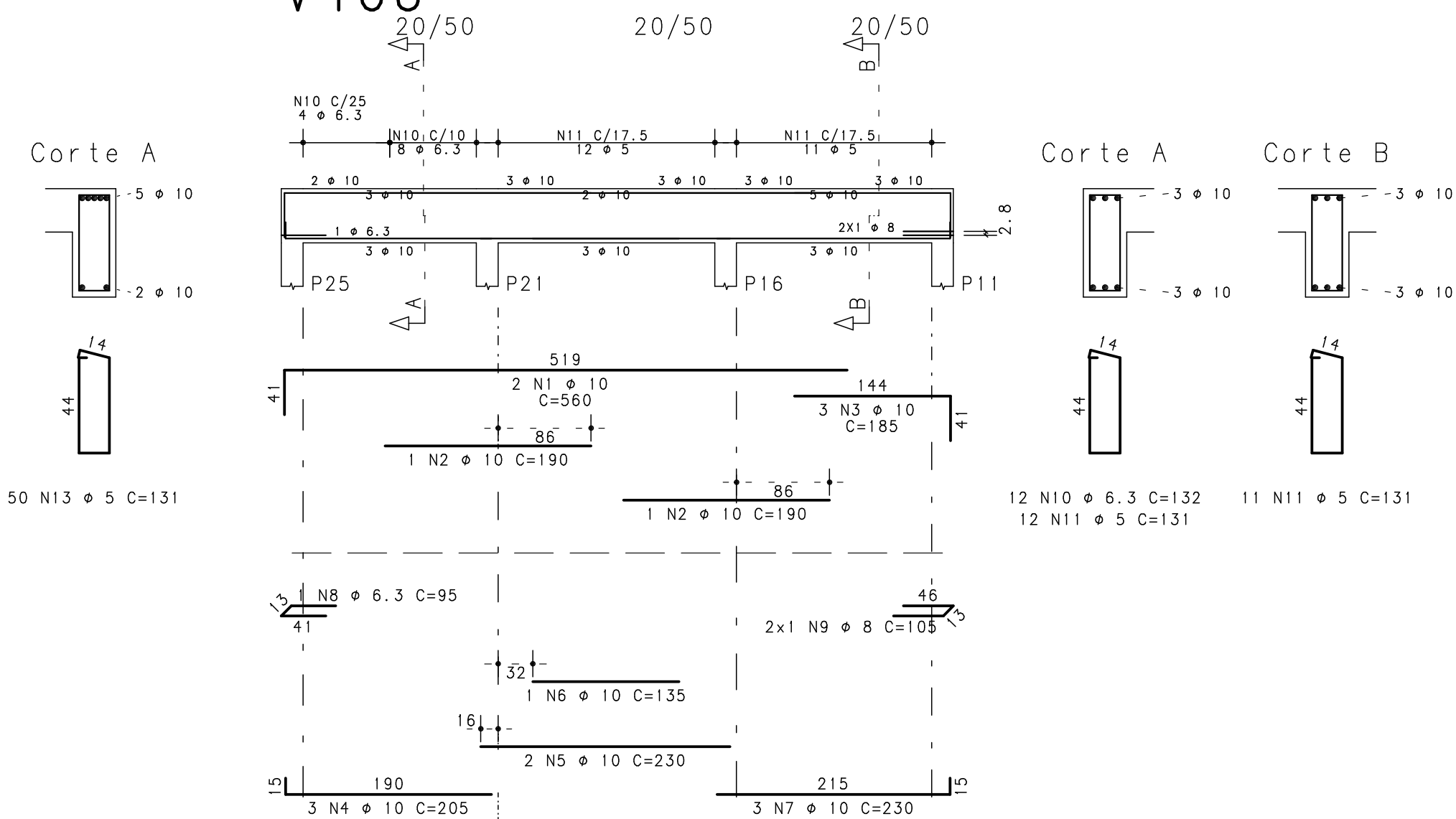


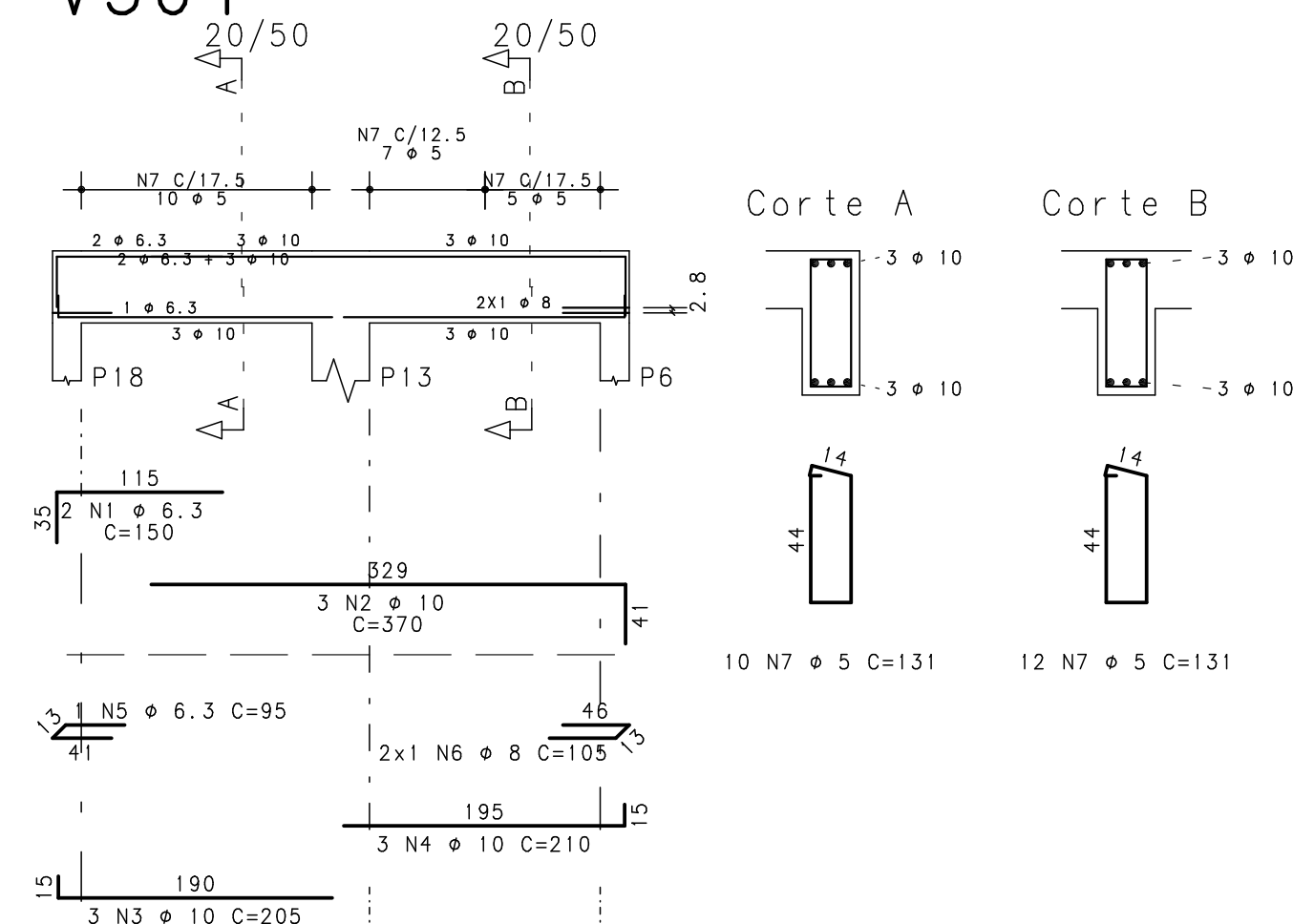
V301



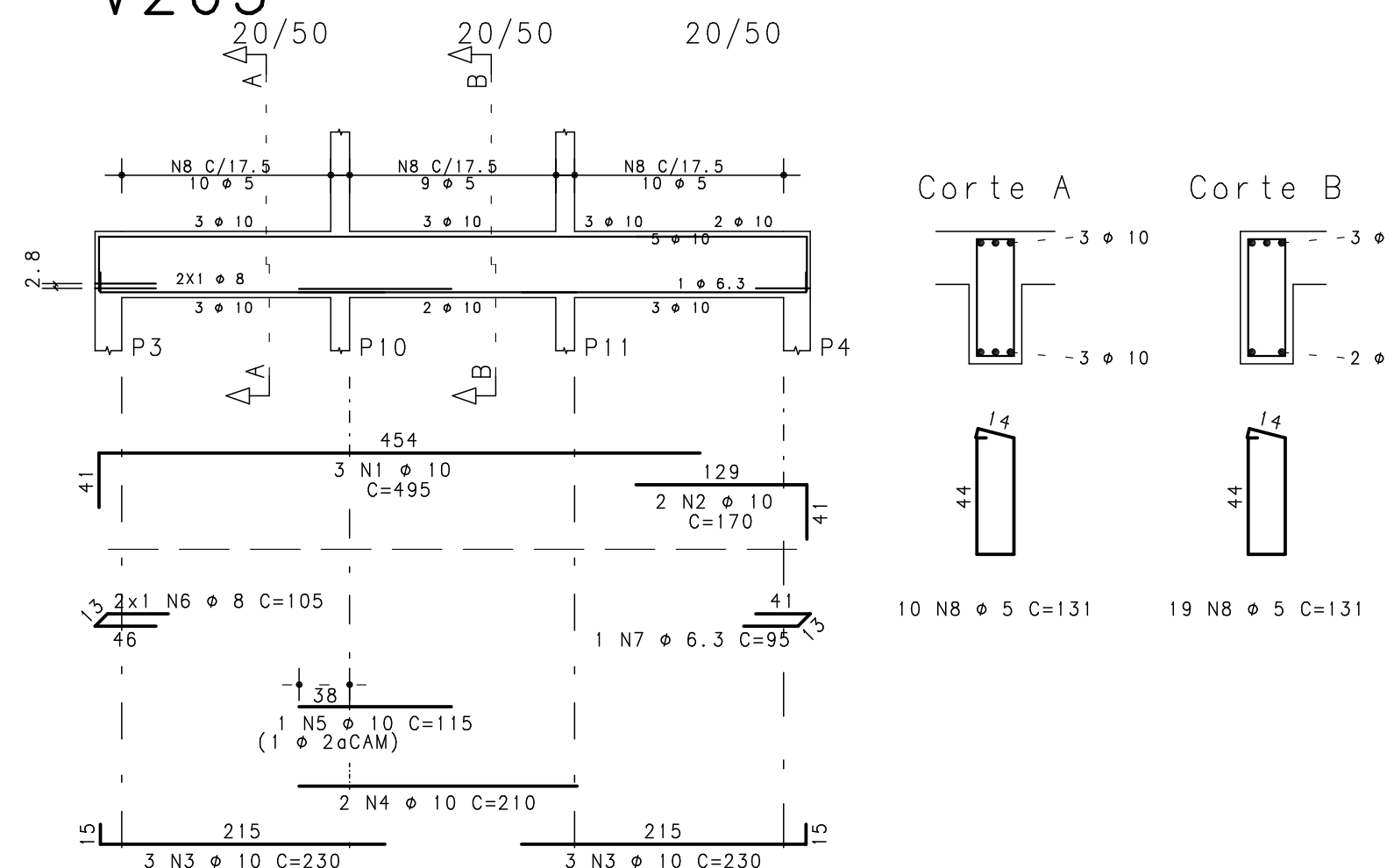
V406



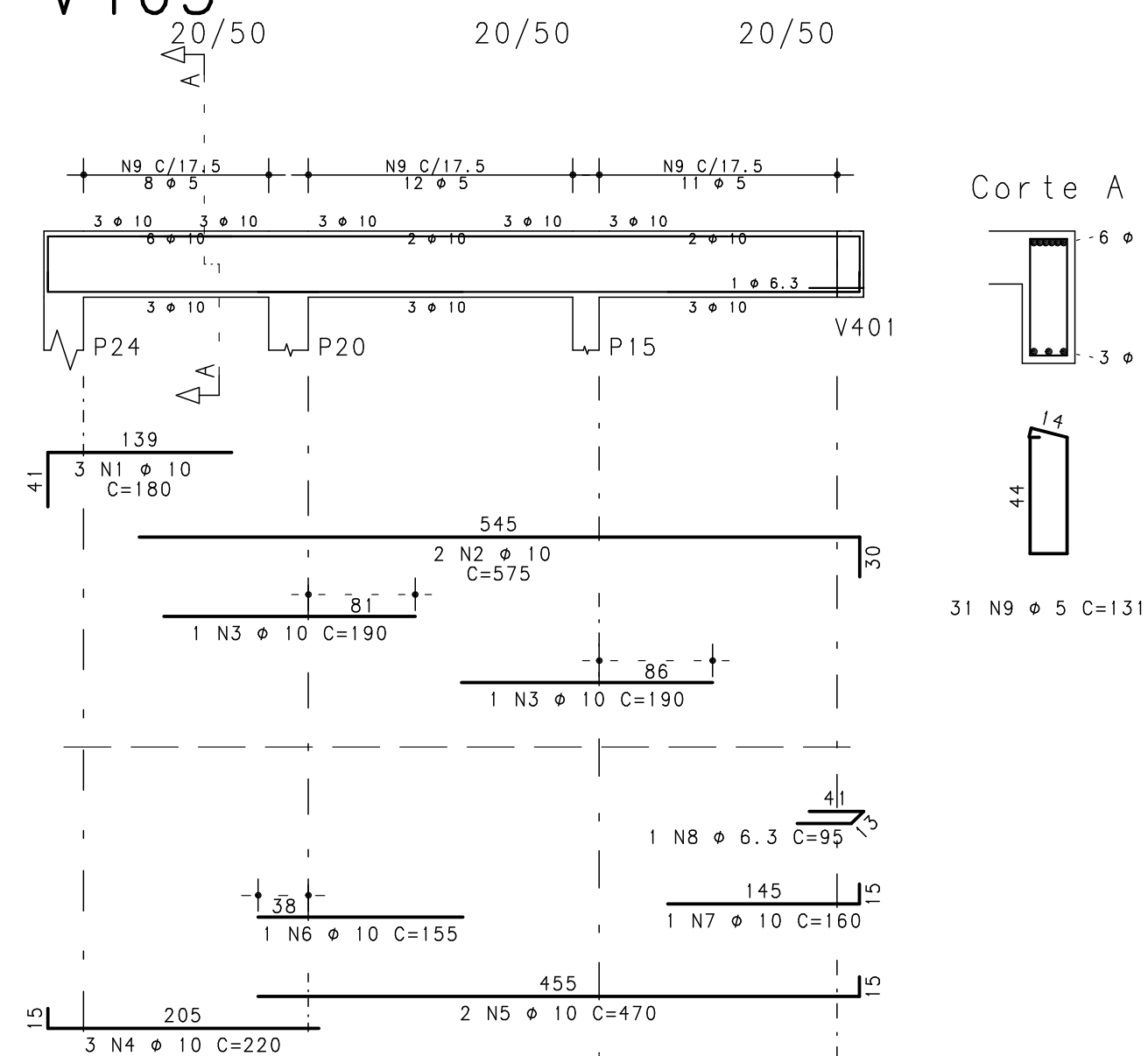
V304



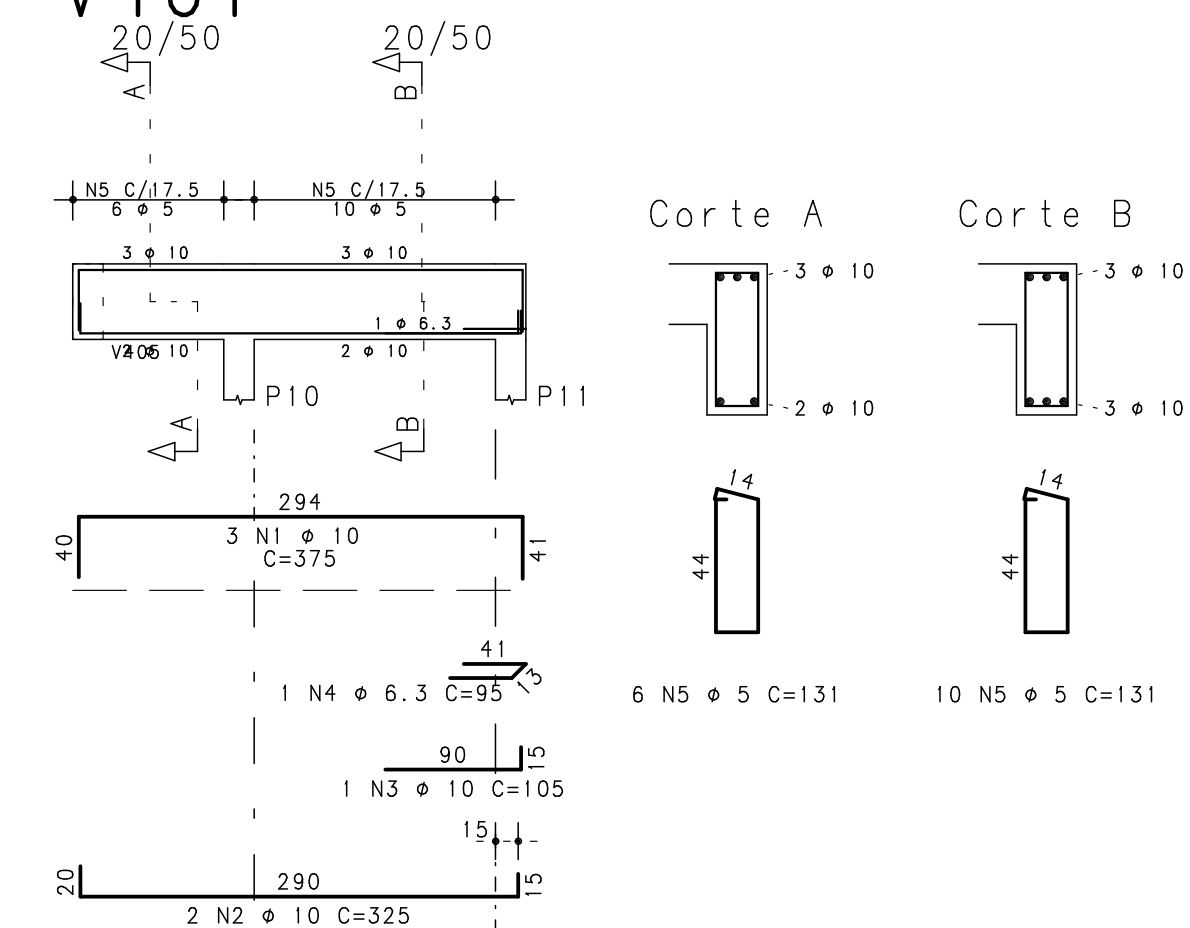
V203



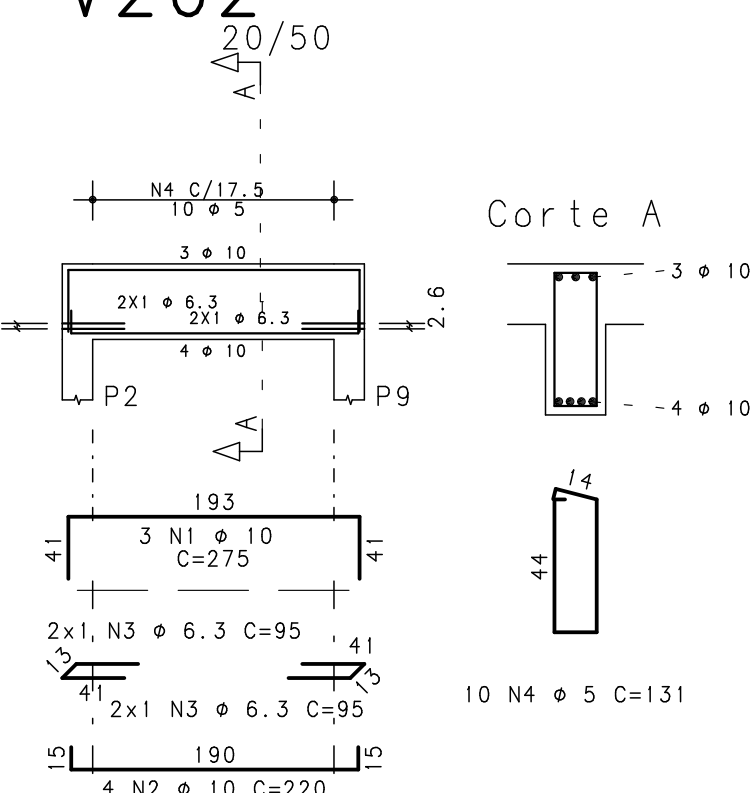
V405



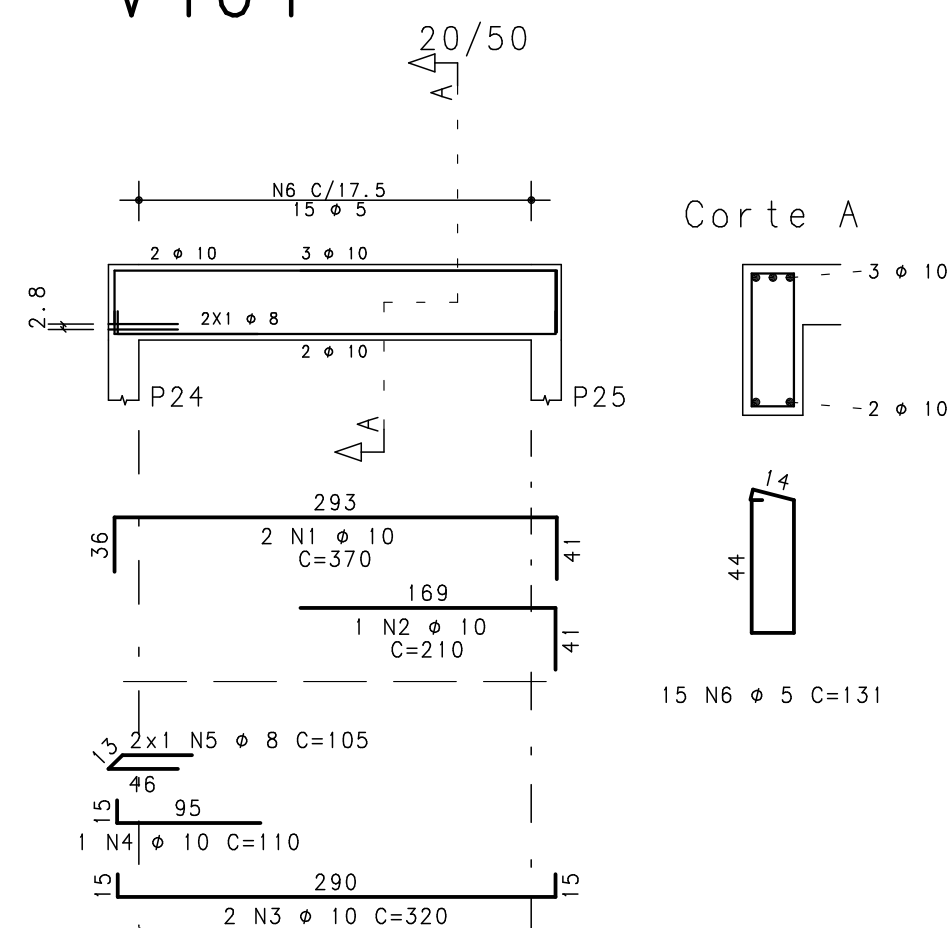
V401



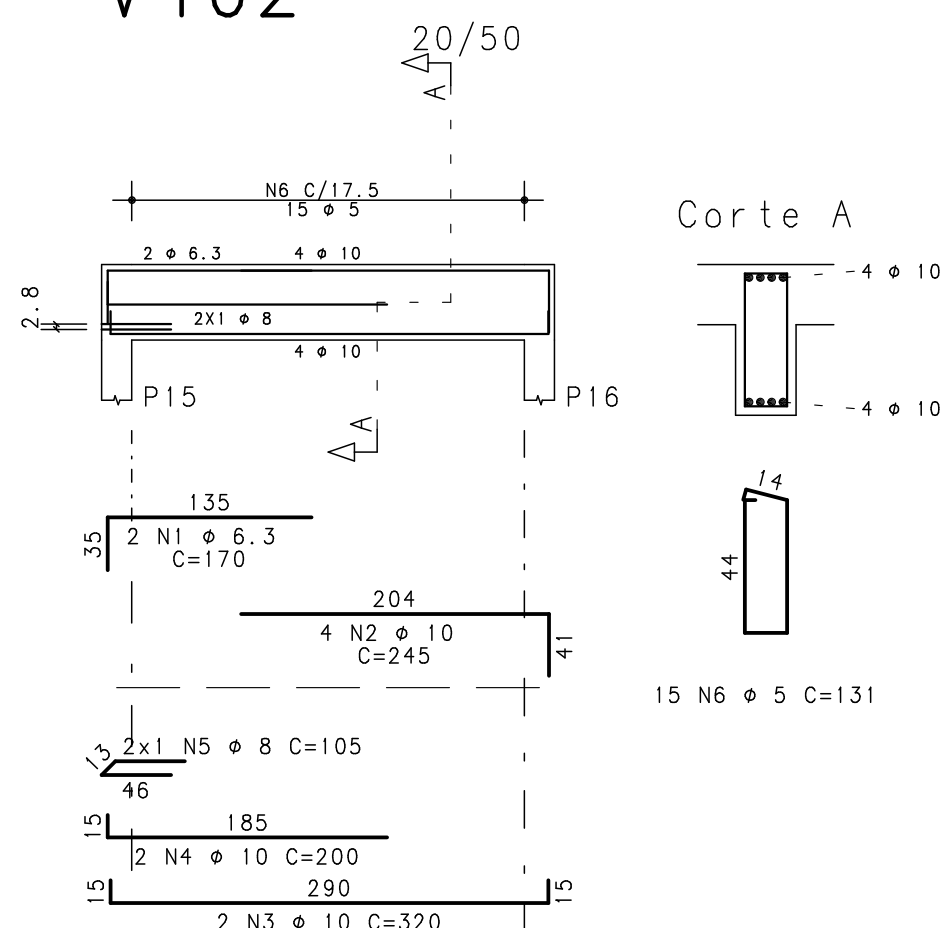
V202



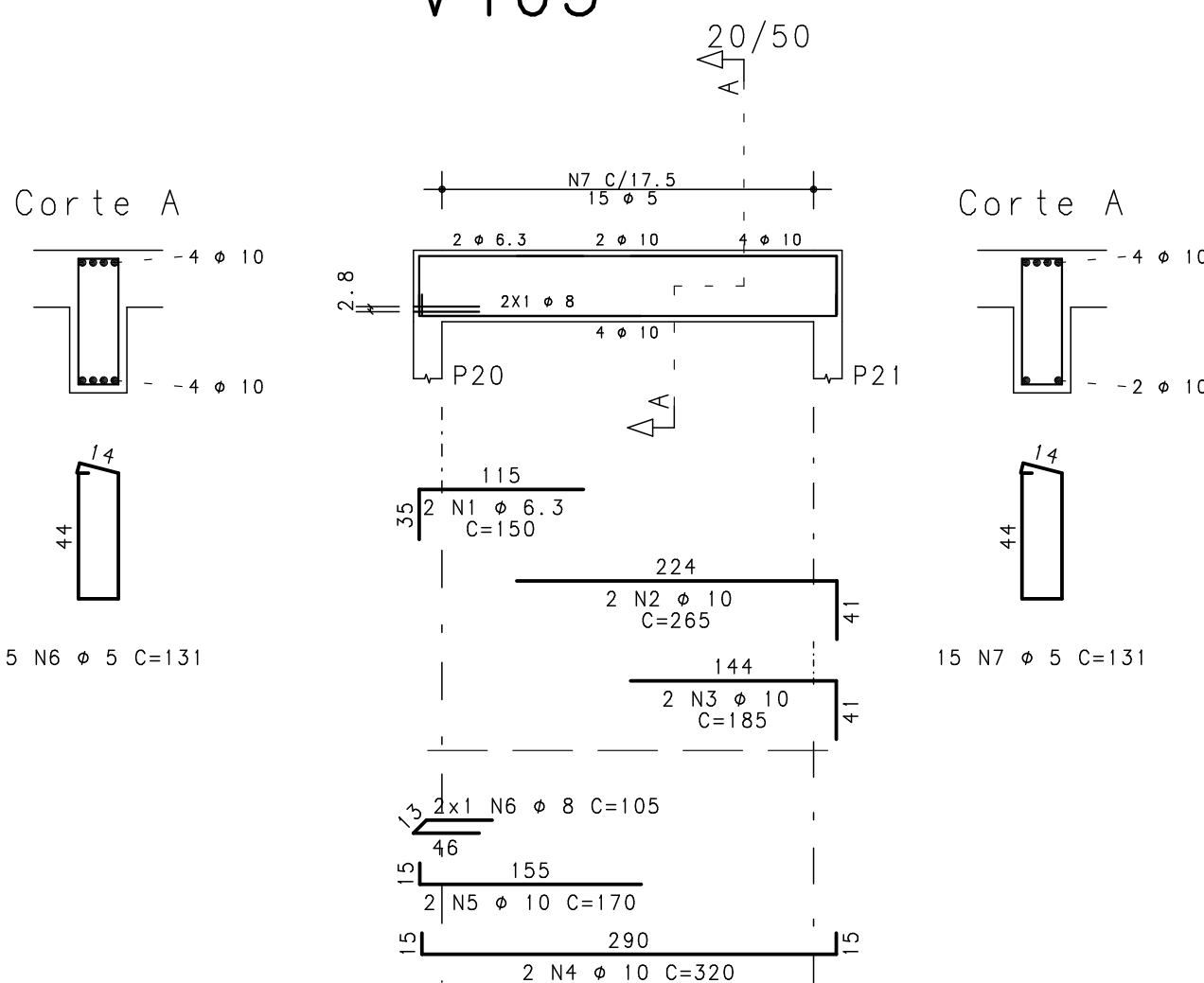
V404



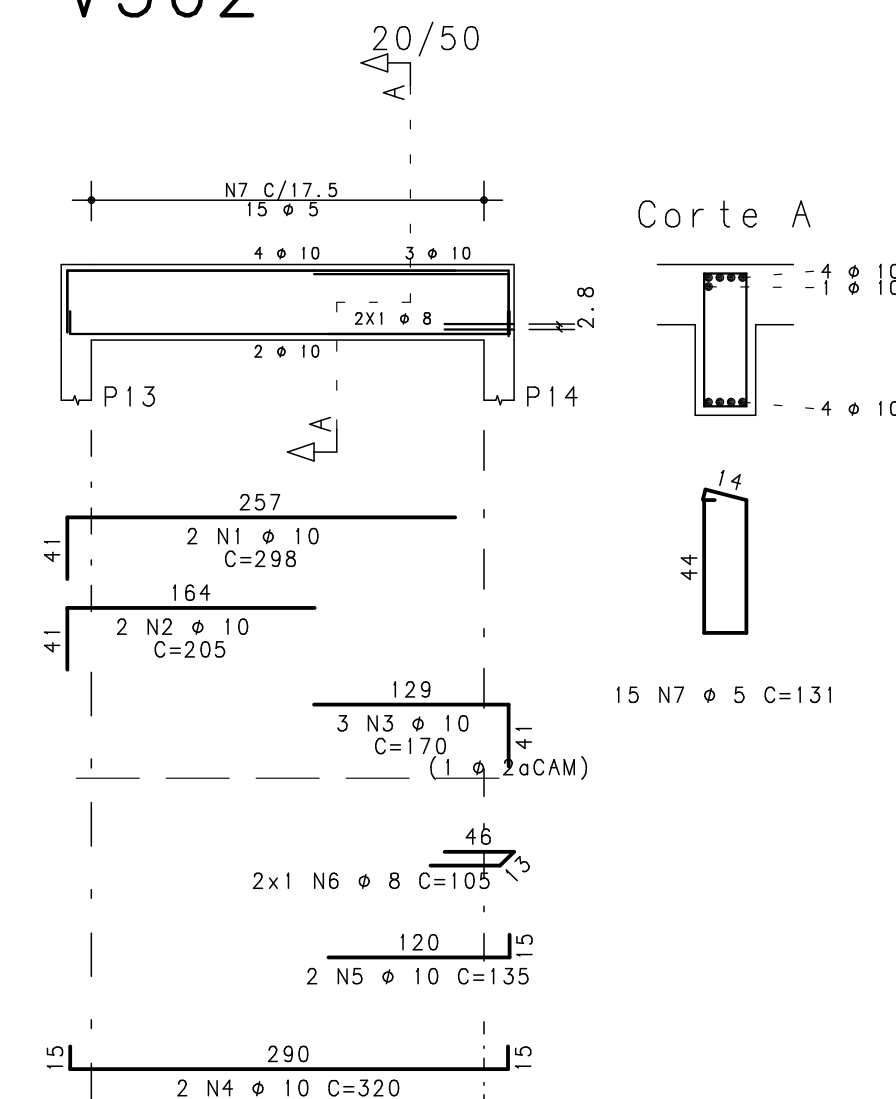
V402



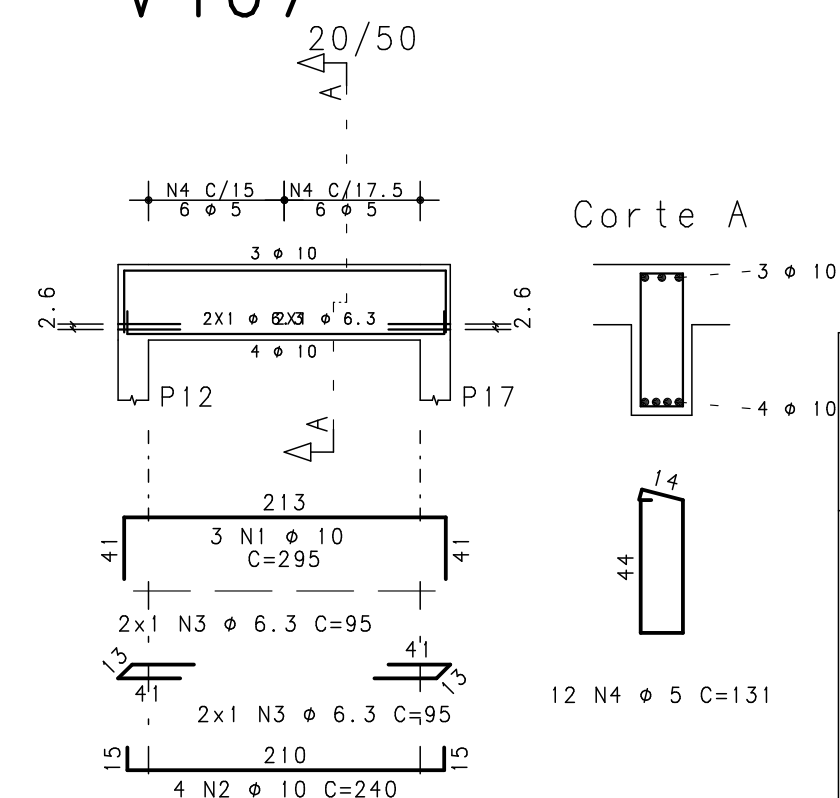
V403



V302



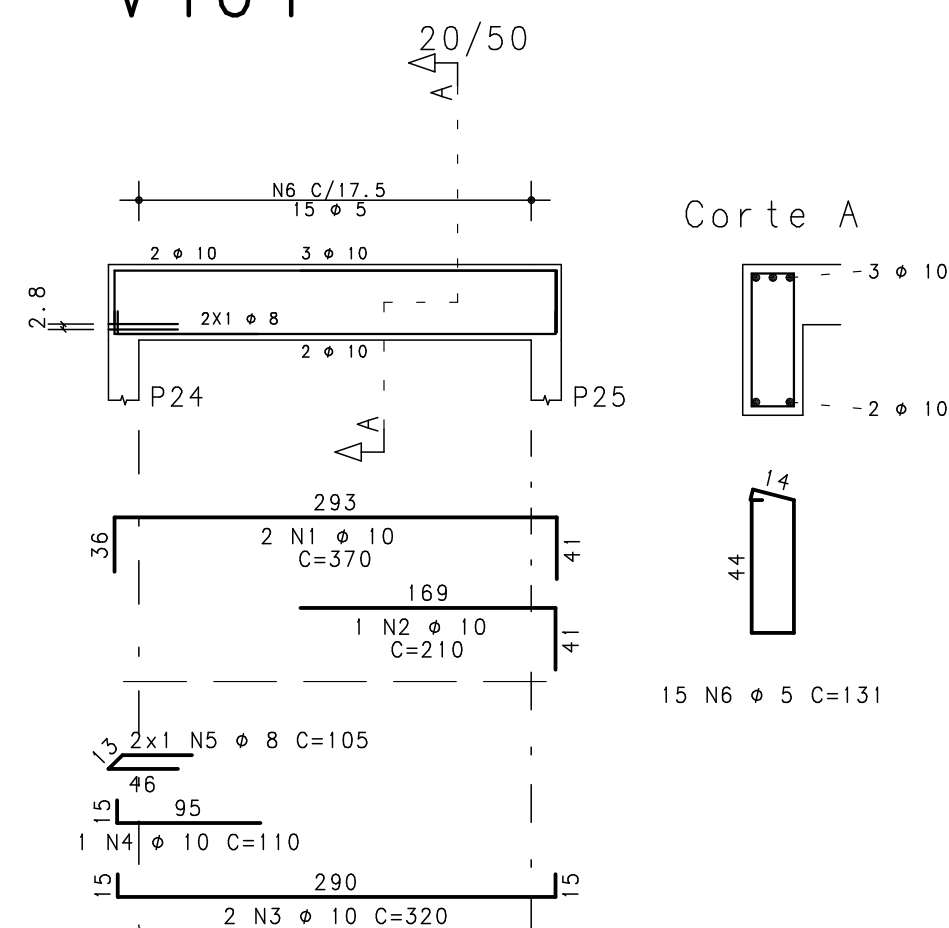
V407



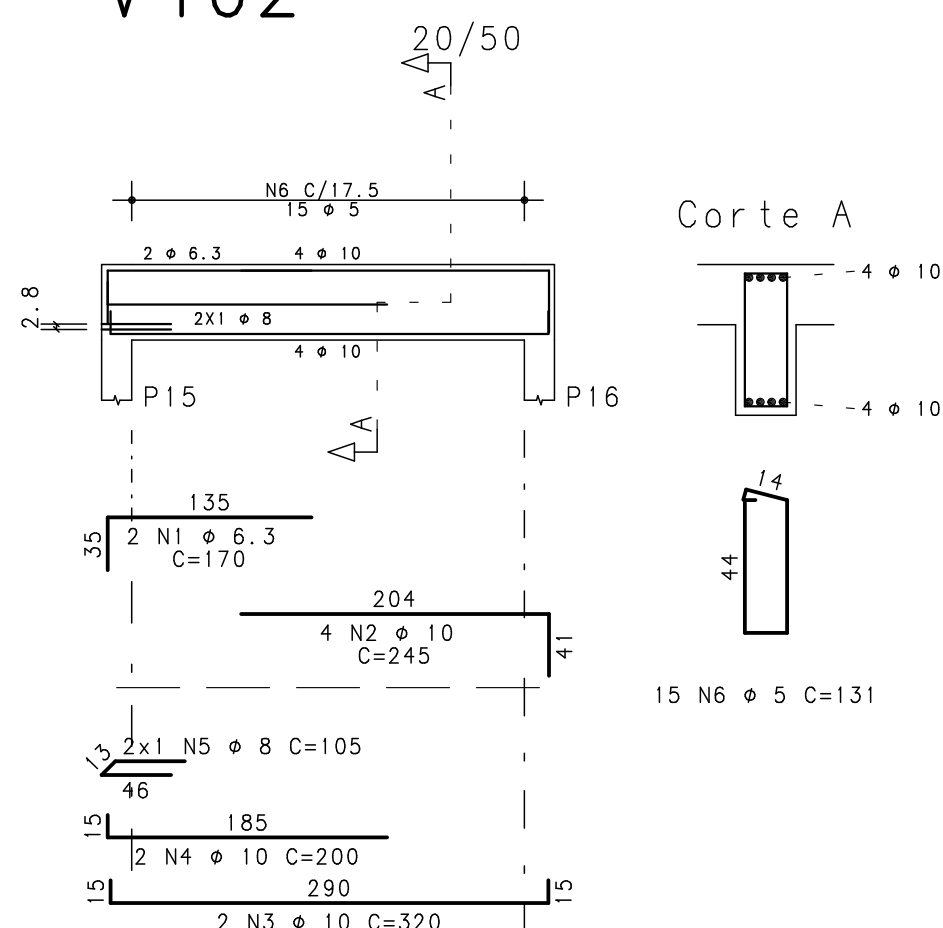
	AÇO	POS	BIT (mm)	QUANT	COMPRIMENTO	
					UNIT (cm)	TOTAL (cm)
V202	50A	1	10	3	275	825
	50A	2	10	4	220	880
	50A	3	6, 3	4	95	380
	60B	4	5	10	131	1310
V203	50A	1	10	3	495	1485
	50A	2	10	2	170	340
	50A	3	10	6	230	1380
	50A	4	10	2	210	420
	50A	5	10	1	115	115
	50A	6	8	2	105	210
	50A	7	6, 3	1	95	95
	60B	8	5	29	131	3799
V301	50A	1	10	2	320	640
	50A	2	10	1	195	195
	50A	3	10	3	575	1725
	50A	4	10	2	295	590
	50A	5	10	1	170	170
	50A	6	10	2	485	970
	50A	7	10	1	115	115
	50A	8	10	1	160	160
	50A	9	10	3	225	675
	50A	10	10	2	305	610
V302	50A	11	10	1	150	150
	50A	12	6, 3	2	95	190
	60B	13	5	50	131	6550
V304	50A	1	10	2	298	596
	50A	2	10	2	205	410
	50A	3	10	3	170	510
	50A	4	10	2	320	640
	50A	5	10	2	275	550
	50A	6	8	2	105	210
V304	60B	7	5	15	131	1965
	50A	1	6, 3	2	150	300
	50A	2	10	3	370	1110
	50A	3	10	3	205	615
	50A	4	10	3	210	630
V401	50A	5	6, 3	1	95	95
	50A	6	8	2	105	210
	60B	7	5	22	131	2882
	50A	1	10	3	375	1125
	50A	2	10	2	325	650
V402	50A	3	10	1	105	105
	50A	4	6, 3	1	95	95
	60B	5	5	16	131	2096
V403	50A	1	6, 3	2	170	340
	50A	2	10	4	245	980
	50A	3	10	2	320	640
	50A	4	10	2	200	400
	50A	5	8	2	105	210
	60B	6	5	15	131	1965
V403	50A	1	6, 3	2	150	300
	50A	2	10	2	265	530
	50A	3	10	2	185	370
	50A	4	10	2	320	640
	50A	5	10	2	170	340
	60B	6	5	15	131	1965
V404	50A	1	10	2	370	740
	50A	2	10	1	210	210
	50A	3	10	2	320	640
	50A	4	10	1	110	110
	50A	5	8	2	105	210
	60B	6	5	15	131	1965
V405	50A	1	10	3	180	540
	50A	2	10	2	575	1150
	50A	3	10	2	190	380
	50A	4	10	3	220	660
	50A	5	10	2	470	940
	50A	6	10	1	155	155
	50A	7	10	1	160	160
	50A	8	6, 3	1	95	95
V406	60B	9	5	31	131	4061
	50A	1	10	2	560	1120
	50A	2	10	2	190	380
V407	50A	3	10	3	185	555
	50A	4	10	3	205	615
	50A	5	10	2	230	460
	50A	6	10	1	135	135
	50A	7	10	3	230	690
	50A	8	6, 3	1	95	95
	50A	9	8	2	105	210
	50A	10	6, 3	12	132	1584
	60B	11	5	23	131	3013
V407	50A	1	10	3	295	885
	50A	2	10	4	240	960
	50A	3	6, 3	4	95	380
	60B	4	5	12	131	1572

RESUMO AÇO CA 50-60			
AÇO	BIT (mm)	COMPR (m)	PESO (kg)
60B	5	331	51
50A	6.3	39	10
50A	8	15	6
50A	10	335	207
Peso Total		60B =	51 kg
Peso Total		50A =	222 kg

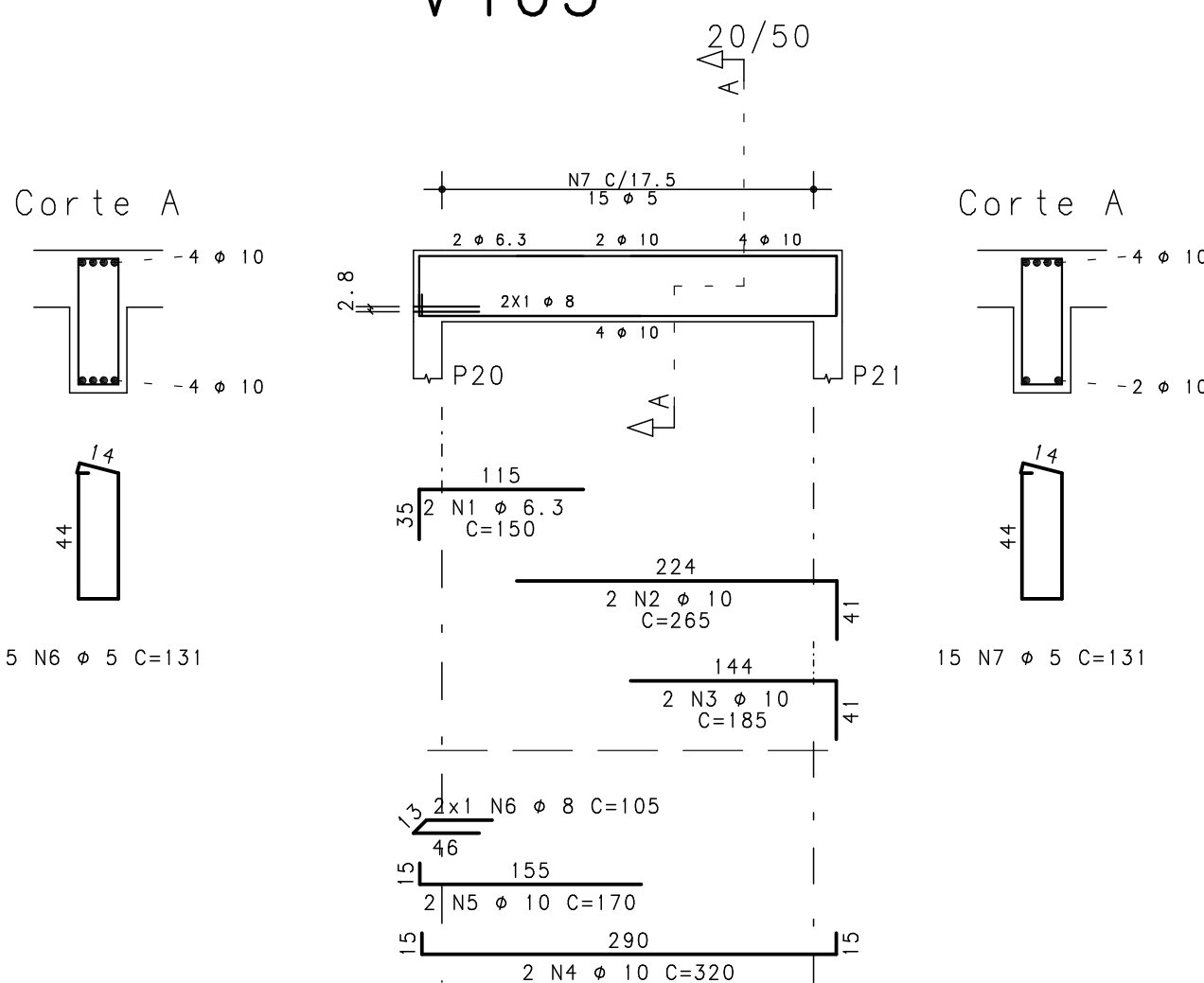
V404



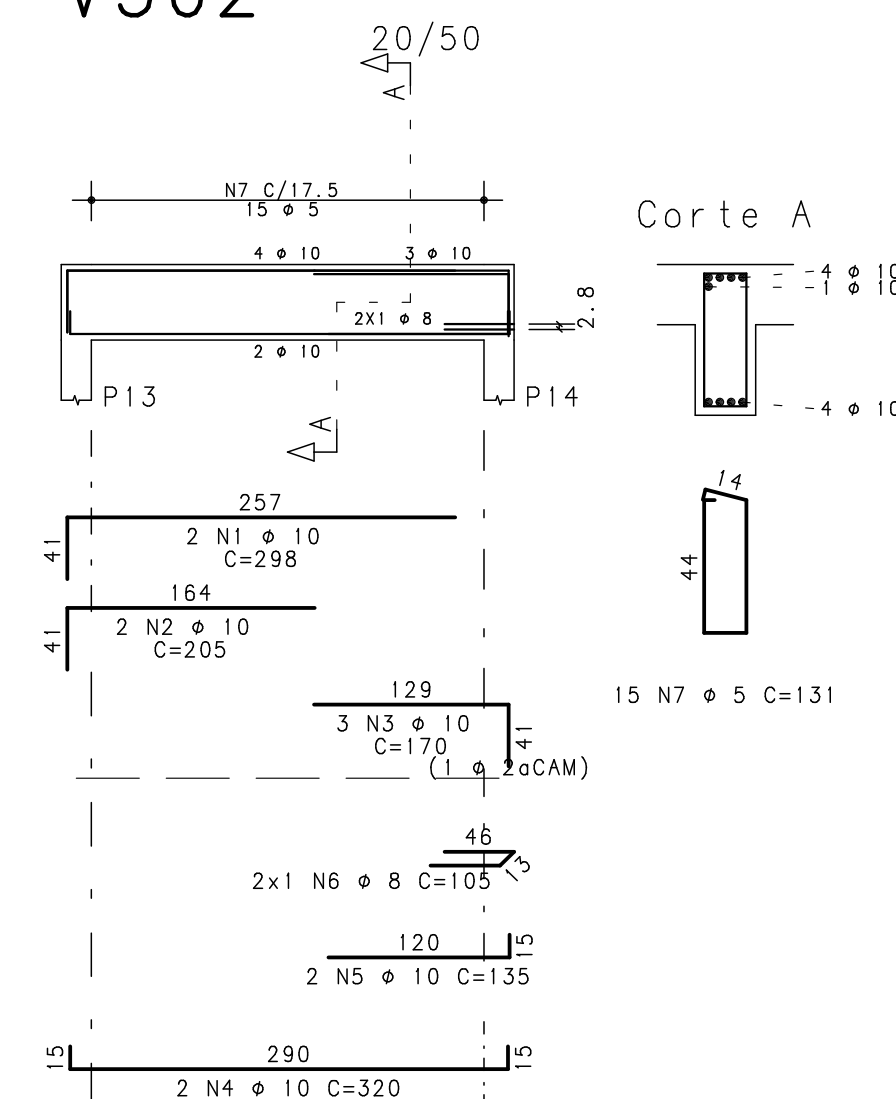
V402



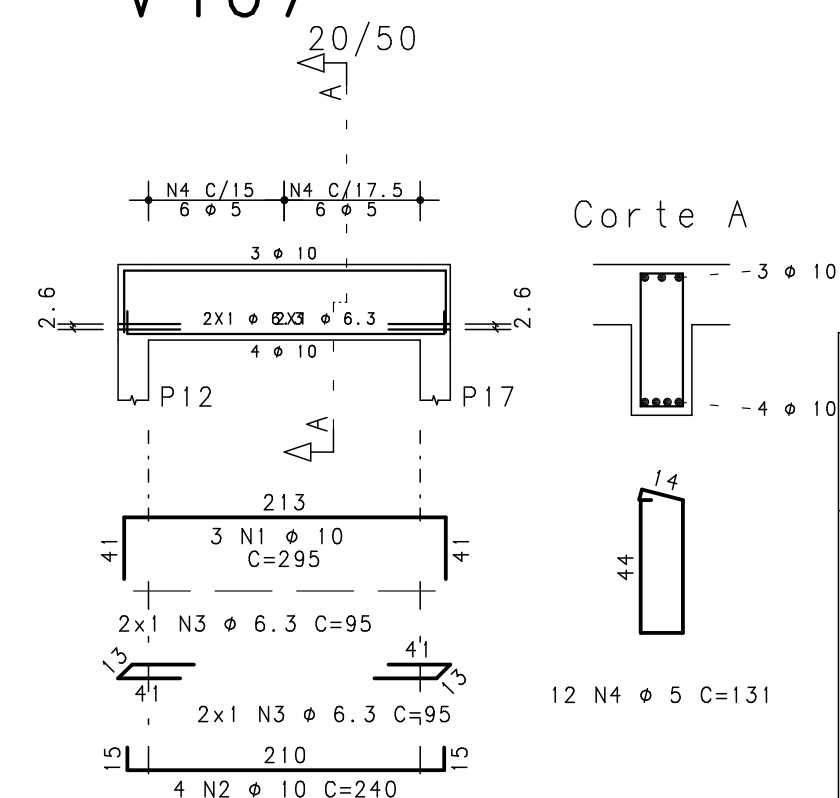
V403



V302



V407



$f_{ck} \text{ 250. kg/cm}^2 - \text{C25}$



Schuring & Schuring Ltda.
Escritório Técnico B.E.SCHURING - Projetos de Engenharia
Av. XV de Novembro, 489 - Porto 2o. Andar - Cuiabá MT
Fone: (065) 321 9959 - Fax: (065) 623 5066 - Email - schuring@terra.com.br

<div> <div>PROJETO ESTRUTURAL</div> <div>PROJETO</div> </div>	PROJETO: PROPRIETARIO: <div> <div>PREFEITURA MUNICIPAL VARZEA GRANDE</div> <div>PROJETO ORLA DO PORTO ALAMEDA JULIO MULLER</div> </div>	
	RESP. TEC. EXECUCAO: <div></div>	OBRA: RAMPA DE ACESSO <div> <div>END.: Alameda Julio Muller, s/n</div> <div>Barro Alameda / Varzea Grande - MT</div> </div>
	AUTORES DO PROJETO: <div> <div>Benedito Eliseu Schuring</div> <div>Eng.Civil-CREA 715/D-MT</div> </div>	ASSUNTO: <div>DET ARM VIGAS</div> <div> <div>PECAS DETALHADAS</div> <div> <div>V202 / V203 / V301 / V302 / V304 / V401</div> <div>V402 / V403 / V404 / V405 / V406 / V407</div> </div> </div>
	<div> <div>Andre Luiz Schuring</div> <div>Eng.Civil- CREA 8697/D-MT</div> </div>	
	FCK: 250 ESCALA: 1:50 ARQUIVO:	DIREITOS AUTORAIS RESERVADOS VERIFICAR MEDIDAS NA OBRA DATA: 07/08/2018 FOLHA No.